

Visit our collaborative blog
saintlouisartmap.org

Visit saintlouisartmap.org for information and critical discussion about the visual arts in St. Louis. Topics are focused on the fine arts, featuring local non-profit institutions with a national and international emphasis, placing them within the local context of St. Louis's thriving and diverse visual arts community.

Visit us online for news about upcoming events and exhibitions at
saintlouisartmap.org

And visit

contemporarystl.org

kemperartmuseum.wustl.edu

laumeier.org

mocra.slu.edu

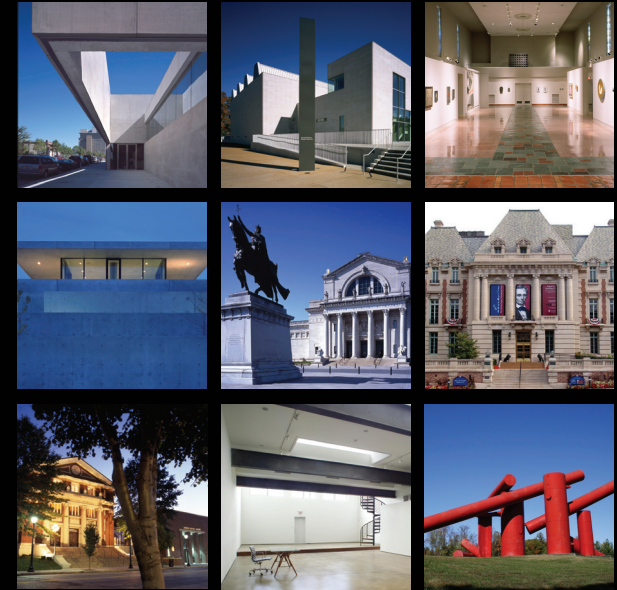
pulitzerarts.org

slam.org

sluma.slu.edu

thesheldon.org/galleries.asp

whiteflagprojects.org



SAINT LOUIS

ART MAP

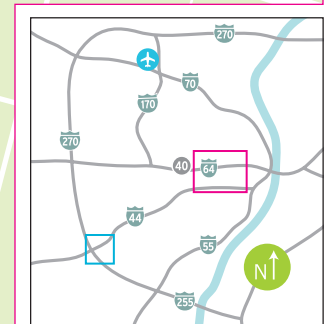
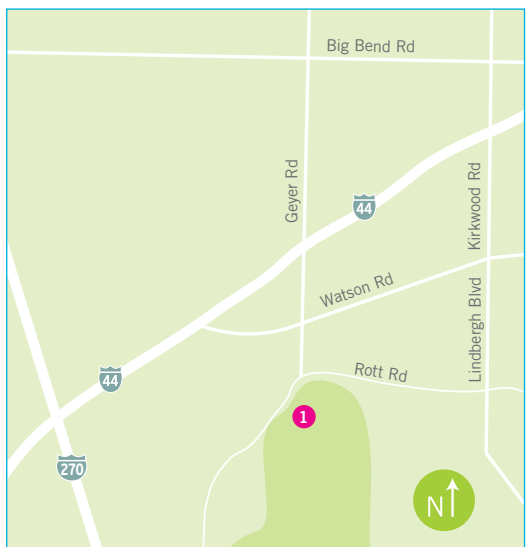
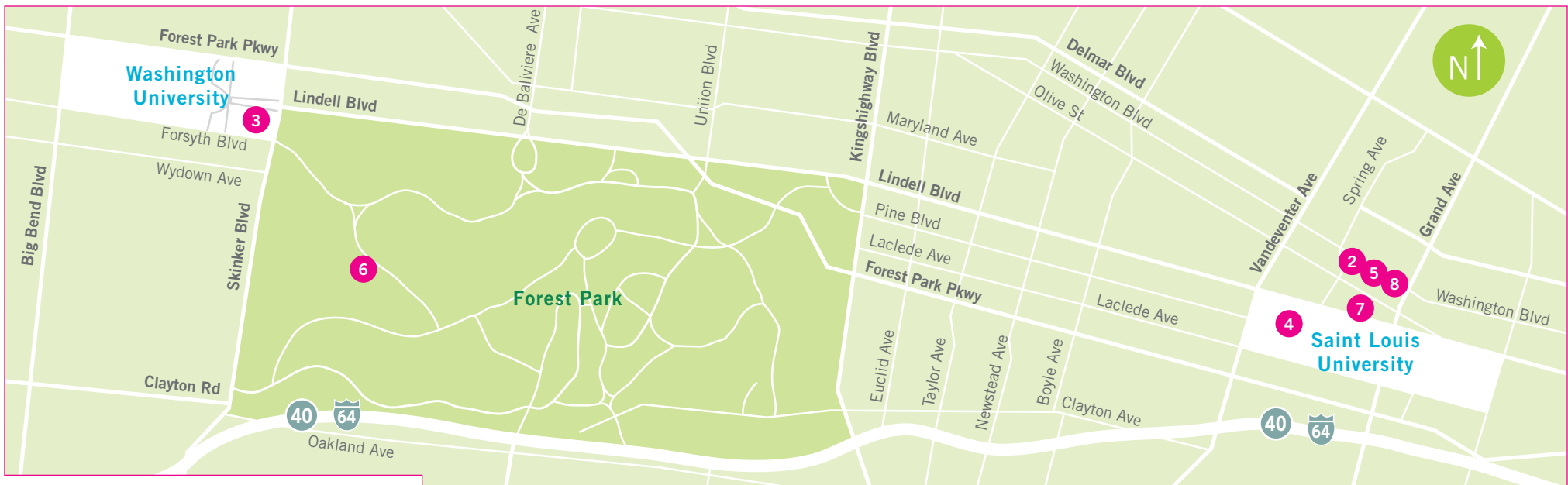
Your guide to the
non-profit visual arts
in St. Louis.

Cover images (L-R)

Top row: *Contemporary Art Museum St. Louis, Mildred Lane Kemper Art Museum, Museum of Contemporary Religious Art*

Second row: *The Pulitzer Foundation for the Arts, Saint Louis Art Museum, The Saint Louis University Museum of Art*

Bottom row: *Sheldon Art Galleries, White Flag Projects, Laumeier Sculpture Park*



1 Laumeier Sculpture Park
 12580 Rott Road
 St. Louis, MO 63127
 314.615.5278
 laumeier.org
Park Hours: Open daily from 8am-sunset with the exception of Christmas and the Thursday before Mother's Day.
Museum Gallery Hours: Weekdays: 10am-5pm; Weekends: 12pm-5pm; Spring/Summer: Closed on Mondays and legal holidays; Fall/Winter: Closed on Mondays, Tuesdays and legal holidays

2 Contemporary Art Museum St. Louis
 3750 Washington Blvd
 St. Louis, MO 63108
 314.535.4660
 contemporarystl.org
Hours: Tues-Sat 10 am-5 pm, Thurs 10 am-8 pm, Sun 11 am-4 pm, Closed Mon

3 Mildred Lane Kemper Art Museum
 On Washington University's Danforth campus near the corner of Skinker & Forsyth Blvds
 St. Louis, MO 63130
 314.935.4523
 kemperartmuseum.wustl.edu
Hours: 11 am-6 pm, Fri 11 am-8 pm, Closed Tuesday

4 Museum of Contemporary Religious Art (MOCRA)
 On the campus of Saint Louis University
 3700 West Pine Blvd
 St. Louis, MO 63103
 314.977.7170
 mocra.slu.edu
Hours: Tues-Sun 11 am-4 pm

5 The Pulitzer Foundation for the Arts
 3716 Washington Blvd
 St. Louis, MO 63108
 314.754.1850
 pulitzerarts.org
Hours: Wed 12 pm-5 pm, Sat 10 am-5 pm

6 Saint Louis Art Museum
 One Fine Arts Drive, Forest Park
 St. Louis, Missouri 63110
 314.721.0072
 slam.org
Hours: Tues-Sun 10 am-5 pm, Fri 10 am-9 pm, Closed Mon

7 The Saint Louis University Museum of Art
 3663 Lindell Blvd
 St. Louis, MO 63108
 314.977.2666
 sluma.slu.edu
Hours: Wed-Sun 11 am-4 pm, Closed on national holidays

8 Sheldon Art Galleries
 3648 Washington Blvd
 St. Louis, MO 63108
 314.533.9900
 thesheldon.org/galleries.asp
Hours: Tues 12 pm-8 pm, Wed - Fri 12 pm-5 pm, Sat 10 am-2 pm

9 White Flag Projects
 4568 Manchester Ave
 St. Louis, MO 63110
 314.531.3442
 whiteflagprojects.org
Hours: Wed 12 pm-7 pm, Thurs - Sat 12 pm-5 pm